



<b>MEZZANINE</b>	
ABC COMPANY	
XYZ COMPANY	
1" = 1'	123456M-PE00
27-Jul-12	SHT 2
XXXXX	

**#1**

**BEAM TO COLUMN**

BOLT THE BEAM TO THE COLUMN USING TWO  $\frac{3}{8}$ "x1 $\frac{1}{2}$ " ASTM A325 BOLTS IN THE ORIENTATION INDICATED ON THE INSTALLATION PLAN. THE CONNECTION IS USED ON THE FOLLOWING BEAM PROFILES ONLY: C8x5.4, C10x6.7 AND C12x7.4.

**#2**

**BEAM TO COLUMN**

BOLT THE BEAM TO THE COLUMN USING THREE  $\frac{3}{8}$ "x1 $\frac{1}{2}$ " ASTM A325 BOLTS IN THE ORIENTATION INDICATED ON THE INSTALLATION PLAN. THE CONNECTION IS USED ON THE FOLLOWING BEAM PROFILES ONLY: C14x8.1, C14x9.3, C16x10.3 AND C16x11.5.

**#3**

**BEAM TO COLUMN**

BOLT THE BEAM TO THE COLUMN USING THREE  $\frac{3}{8}$ "x1 $\frac{1}{2}$ " ASTM A325 BOLTS IN THE ORIENTATION INDICATED ON THE INSTALLATION PLAN. THE CONNECTION IS USED ON THE FOLLOWING BEAM PROFILES ONLY: C14x8.1, C14x9.3, C16x10.3 AND C16x11.5.

**#4**

**BEAM TO BEAM**

BOLT THE BEAM TO THE SUPPORTING BEAM USING SIX  $\frac{3}{8}$ "x1 $\frac{1}{2}$ " ASTM A325 BOLTS IN THE ORIENTATION INDICATED ON THE INSTALLATION PLAN. THE CONNECTION IS USED ON THE FOLLOWING CONNECTING BEAM PROFILES ONLY: C14x8.1, C14x9.3, C16x10.3 AND C16x11.5.

ALL  $\frac{3}{8}$ " BOLTS MUST BE INSTALLED TO 208 FT-LB TORQUE

**#5**

**BEAM TO BEAM**

BOLT THE BEAM TO THE SUPPORTING BEAM USING FOUR  $\frac{3}{8}$ "x1 $\frac{1}{2}$ " ASTM A325 BOLTS IN THE ORIENTATION INDICATED ON THE INSTALLATION PLAN. THE CONNECTION IS USED ON THE FOLLOWING CONNECTING BEAM PROFILES ONLY: C8x5.4, C10x6.7 AND C12x7.4.

ALL  $\frac{3}{8}$ " BOLTS MUST BE INSTALLED TO 208 FT-LB TORQUE

**#6**

THE COLUMN SHALL BE WELDED ON THE BASE PLATE AROUND ITS ENTIRE PERIMETER. BASE PLATES ARE PRE-PUNCHED WITH FOUR  $\frac{3}{4}$ " DIAMETER HOLES FOR ANCHORS.

ANCHORED WITH 4 EACH  $\frac{3}{4}$ " RED HEAD TRU BOLT+WEDGE ANCHORS ESR-2427, SPECIAL INSPECTION IS REQUIRED.

ANCHOR DESIGN NOT BY COGAN. ANCHOR BOLTS ARE NOT SUPPLIED BY COGAN.

**#7**

**BRIDGING**

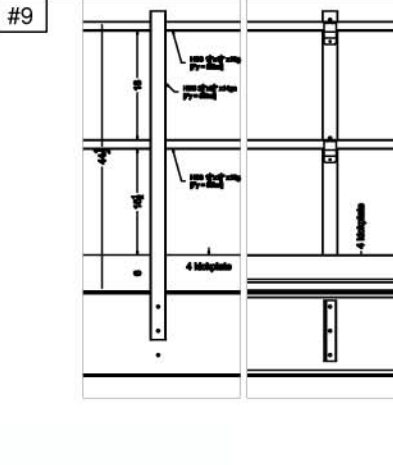
FASTEN THE BRIDGING ANGLES AT EACH FLOOR JOIST BOTTOM FLANGE USING ONE SELF-TAPPING TEK SCREW.

**#8**

**DECK**

FASTEN THE CORRUGATED DECK ON TO EACH FLOOR JOIST USING  $\frac{3}{8}$ " SELF-TAPPING "TEK" SCREWS AT MAX. DISTANCE OF 12" O.C.

ROW 1	1.5"	1.5"
ROW 2	1.5"	1.5"
ROW 3	1.5"	1.5"
ROW 4	1.5"	1.5"
ROW 5	1.5"	1.5"



**#10**

EXAMPLE

CROSS BRACE XB1 120 C/C

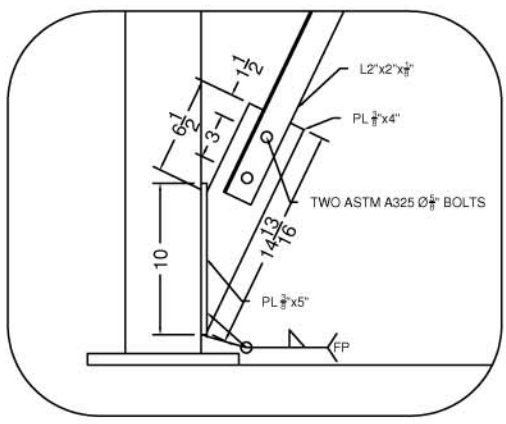
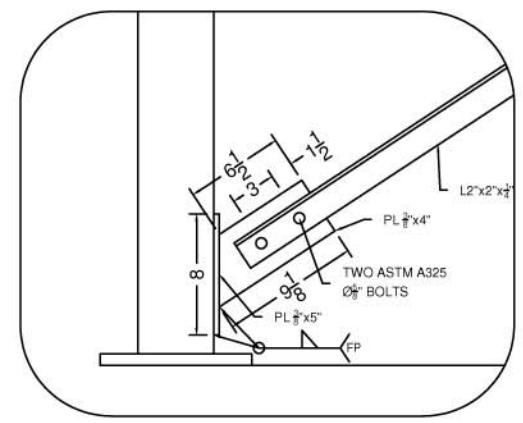
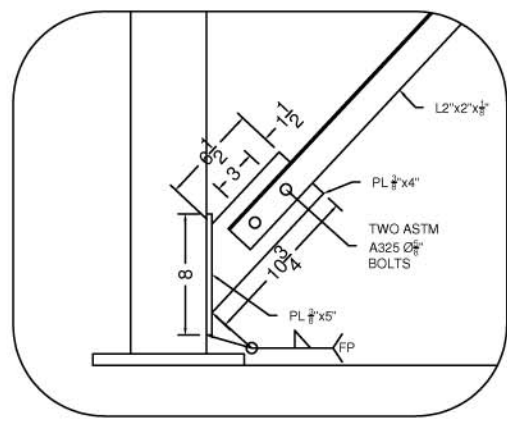
CROSS BRACE XB1 192 C/C

CROSS BRACE XB3 64 C/C

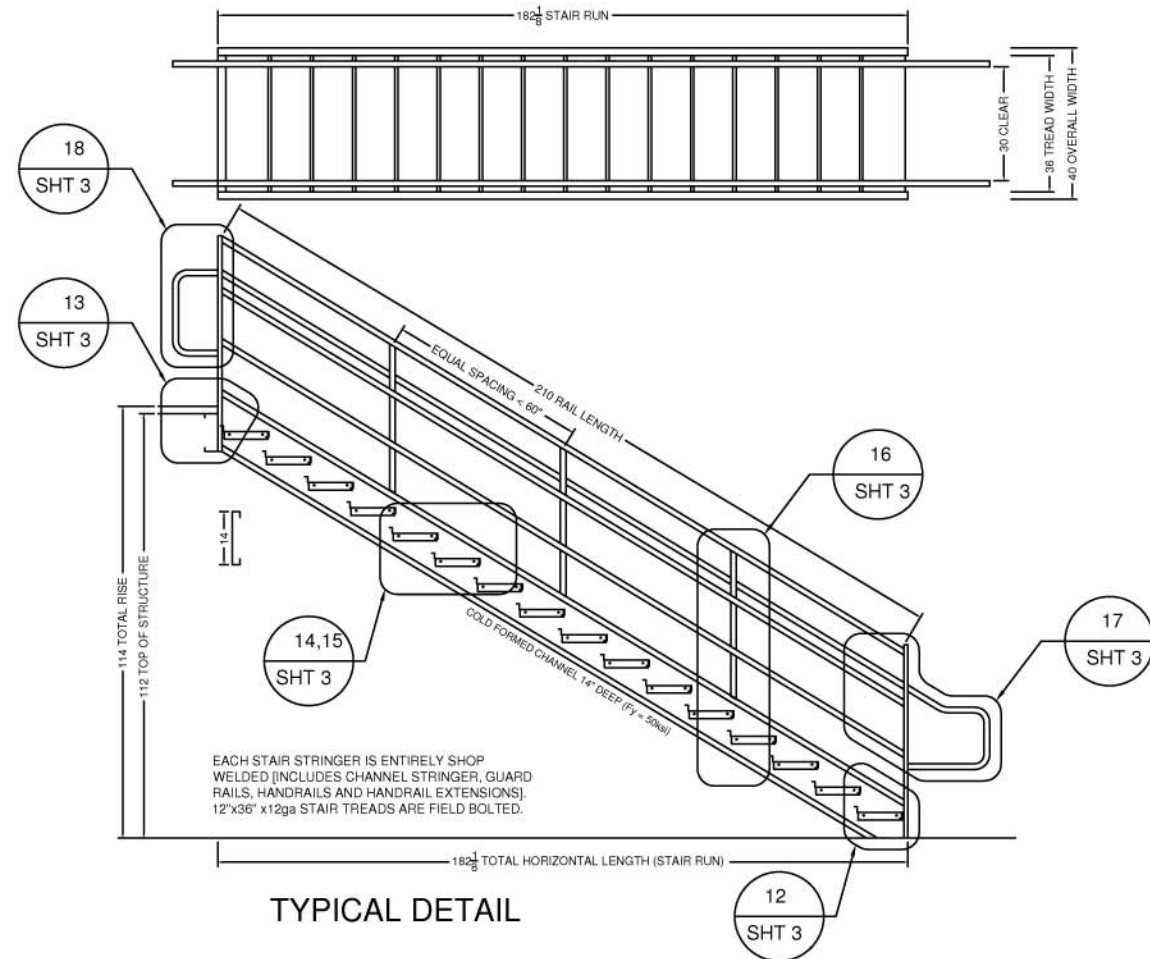
ALL VERTICAL BRACES ARE ANGLE BRACES BOLTED TO  $\frac{3}{8}$ " GUSSET PLATES. ALL GUSSETS ARE SHOP WELDED TO COLUMNS. ALL BRACES ARE FIELD BOLTED USING ASTM A325  $\frac{3}{8}$ " BOLTS.

EDGE DISTANCE FOR ALL BOLT HOLES IS 1 $\frac{1}{2}$ " AND BOLTS HOLES ARE 3" ON CENTER.

EXAMPLE

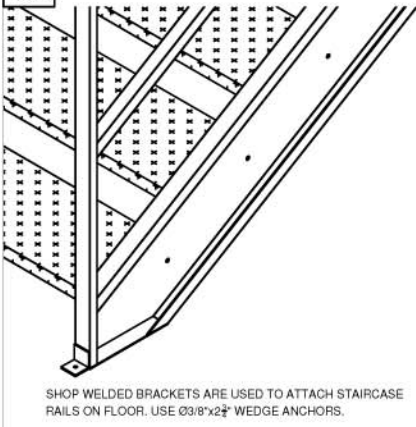


#11

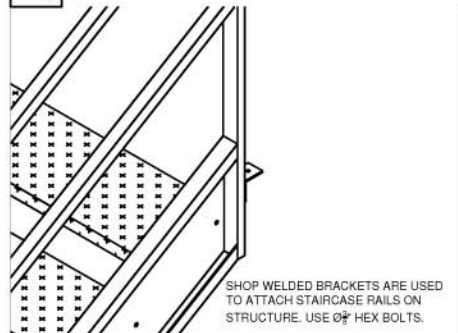


TYPICAL DETAIL

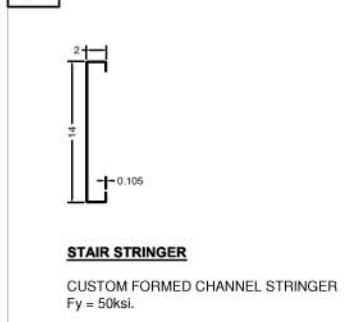
#12



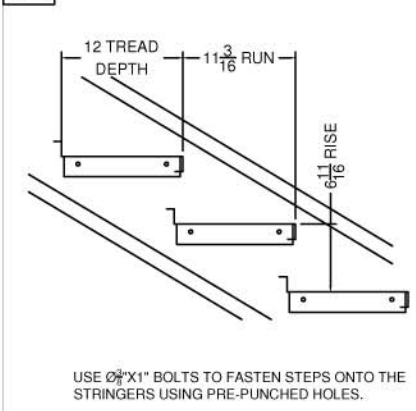
#13



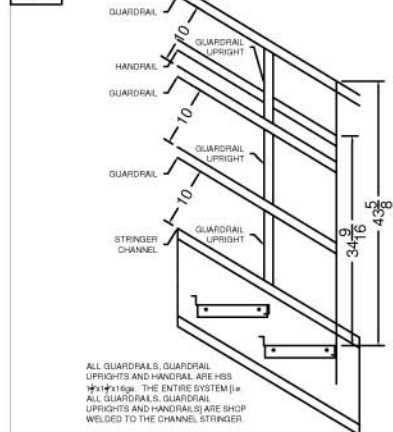
#14



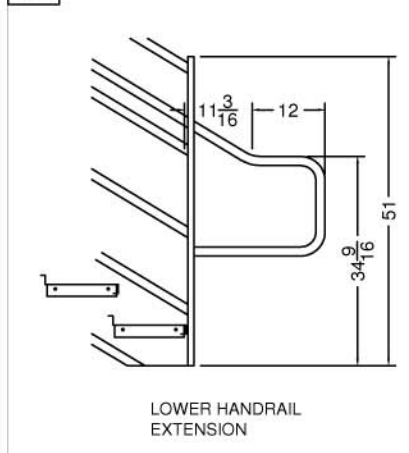
#15



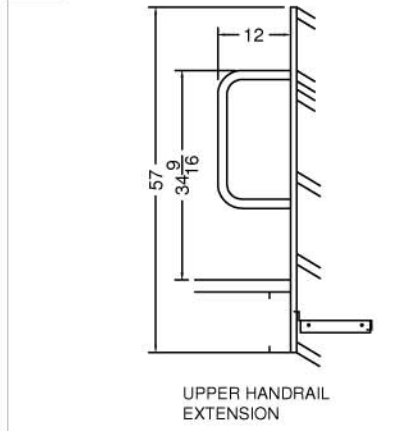
#16



#17



#18



**MEZZANINE**

ABC COMPANY	
XYZ COMPANY	
T = 1'	123456M-PE00
27-Jul-12	SHT 3
XXXXX	

**Material Properties**

Component	Yield Strength [ksi]	Relevant Specification
COLUMNS	50	ASTM A500 Grade C SOW
BASE PLATES	44	ASTM A36 4W and 50W
CHANNELS	50	ASTM A1011 Grade 50
BEAMS	50	ASTM A572 Grade 50
BRACES	44	ASTM A36 4W and 50W
STAIR STRINGERS	50	ASTM A1011 Grade 50
GUARD RAILS	50	ASTM A36 4W and 50W
BOLTS		ASTM A325
CORRUGATED DECK	33	ASTM A653M S5 Grade 230

ALL BEAM TO BEAM CONNECTIONS ARE MADE WITH ASTM A325 BOLTS (3)  
ALL BEAM TO COLUMN CONNECTIONS ARE MADE WITH ASTM A325 BOLTS (3)  
ALL KNEE BRACES AND HANDRAIL POSTS ARE BOLTED WITH ASTM A325 (3)  
ASTM A325 STRUCTURAL BOLTS ARE SUPPLIED BY COGAN (MANUFACTURE)

EXAMPLE

